



Datenblatt - Fiche technique - Data sheet

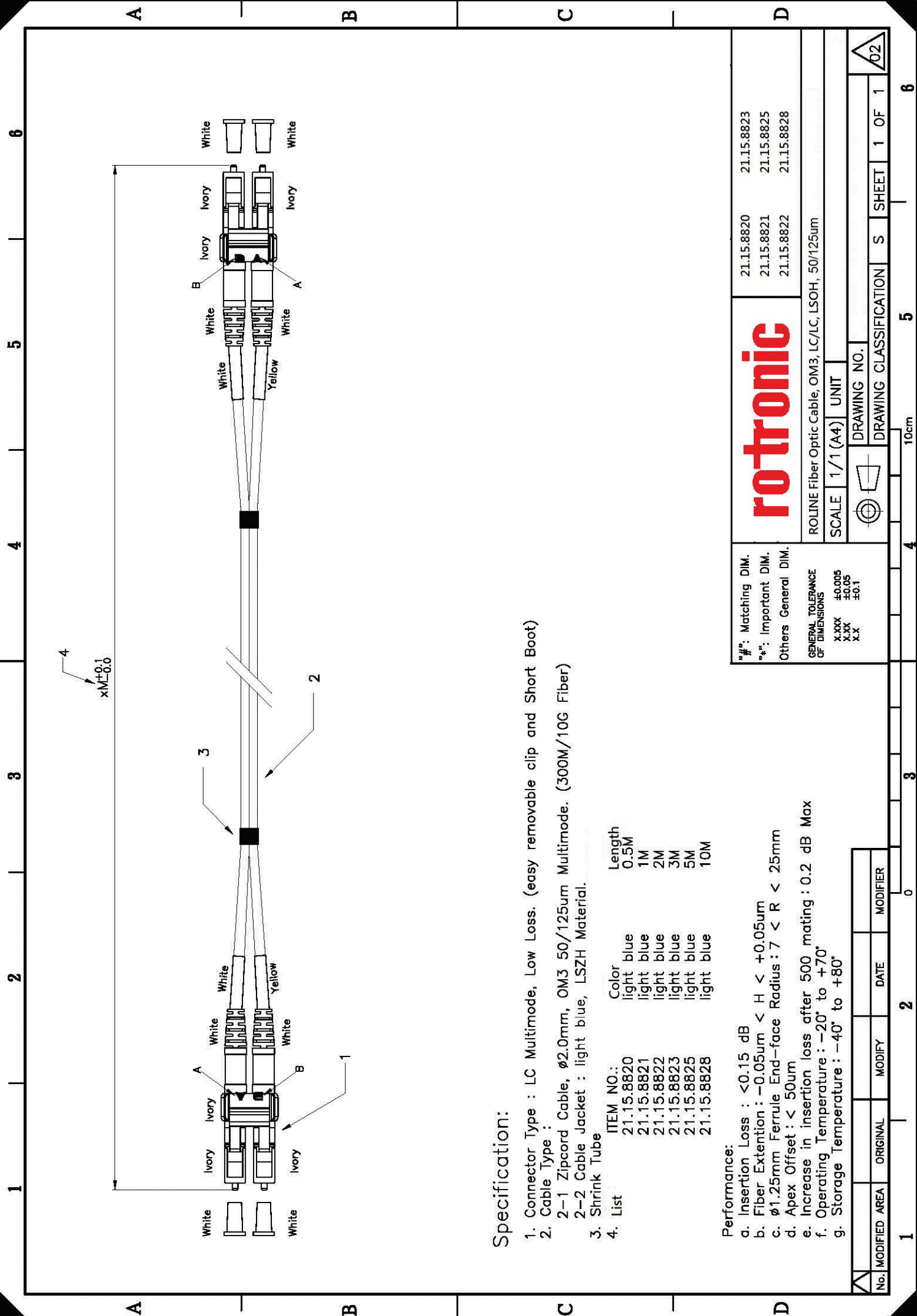
21.15.8820



ROLINE LWL-Kabel 50/125 μ m OM3, LC/LC, Low-Loss-Stecker, 0,5m

ROLINE Câble FO 50/125 μ m OM3, LC/LC, connecteurs Low-Loss, 0,5m

ROLINE FO Jumper Cable 50/125 μ m OM3, LC/LC, Low-Loss-Connector, 0.5 m



Specification:

1. Connector Type : LC Multimode, Low Loss. (easy removable clip and Short Boot)

2. Cable Type :
2-1 Zipcord Cable, ϕ 2.0mm, OM3 50/125um Multimode. (300M/10G Fiber)

3. Shrink Tube

4. List

| ITEM NO.: | Color | Length |
|------------|------------|--------|
| 21.15.8820 | light blue | 0.5M |
| 21.15.8821 | light blue | 1M |
| 21.15.8822 | light blue | 2M |
| 21.15.8823 | light blue | 3M |
| 21.15.8825 | light blue | 5M |
| 21.15.8828 | light blue | 10M |

- Performance:**
- a. Insertion Loss : < 0.15 dB
 - b. Fiber Extension : $-0.05\mu\text{m} < H < +0.05\mu\text{m}$
 - c. ϕ 1.25mm Ferrule End-face Radius : $7 < R < 25\text{mm}$
 - d. Apex Offset : $< 50\mu\text{m}$
 - e. Increase in insertion loss after 500 mating : 0.2 dB Max
 - f. Operating Temperature : -20° to $+70^\circ$
 - g. Storage Temperature : -40° to $+80^\circ$

*#: Matching DIM.
*#: Important DIM.
Others General DIM.

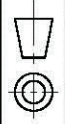
GENERAL TOLERANCE OF DIMENSIONS

| | |
|-------|-------------|
| X.XXX | ± 0.005 |
| X.XX | ± 0.05 |
| X.X | ± 0.1 |

rotronic

ROLINE Fiber Optic Cable, OM3, LC/LC, LSOH, 50/125um

SCALE 1/1 (A4) UNIT



DRAWING NO.

DRAWING CLASSIFICATION S SHEET 1 OF 1



| No. | MODIFIED AREA | ORIGINAL | MODIFY | DATE | MODIFIER |
|-----|---------------|----------|--------|------|----------|
| 1 | | | 2 | 0 | |

10cm

6