



Datenblatt - Fiche technique - Data sheet

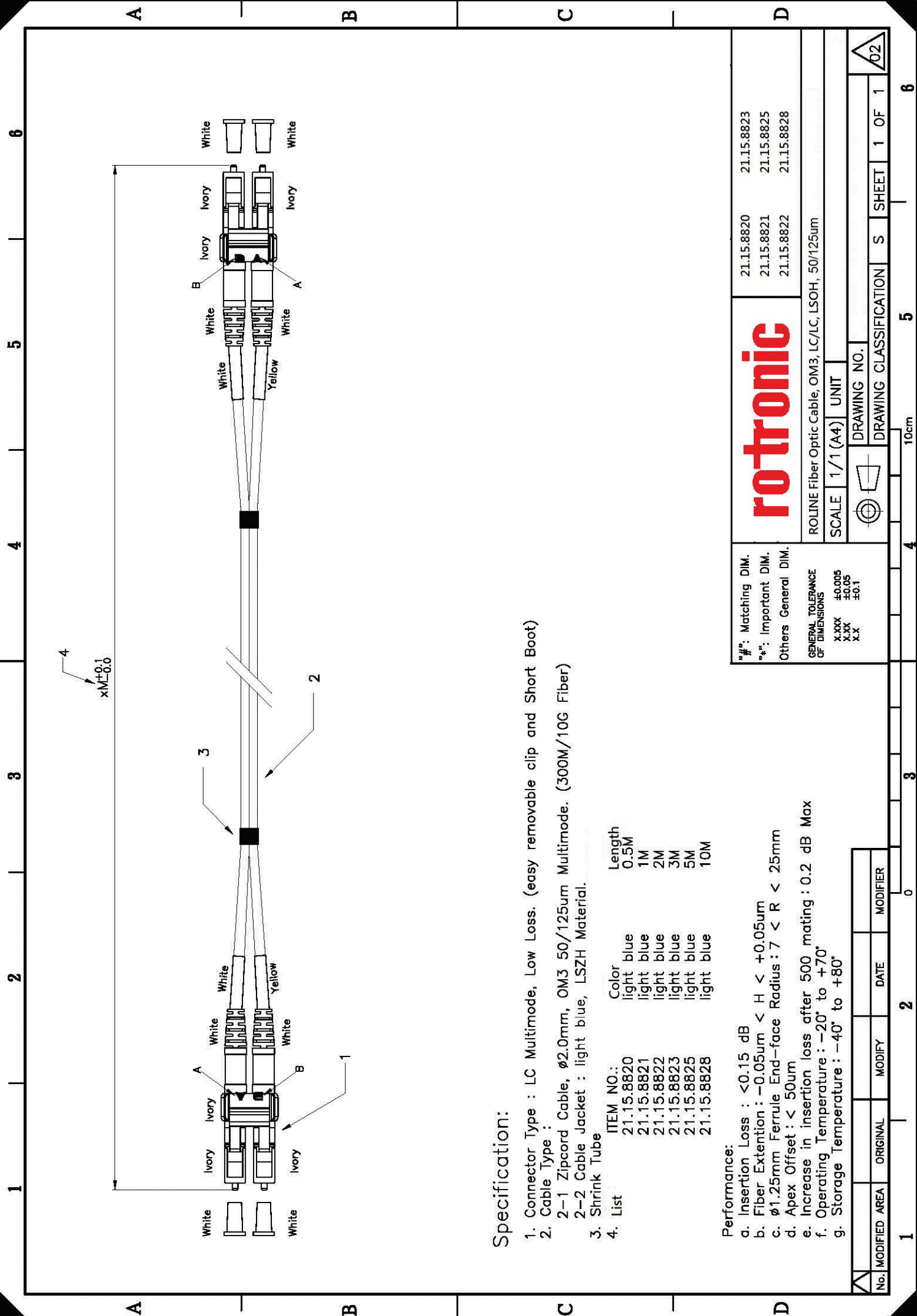
21.15.8821



ROLINE LWL-Kabel 50/125 μ m OM3, LC/LC, Low-Loss-Stecker, 1m

ROLINE Câble FO 50/125 μ m OM3, LC/LC, connecteurs Low-Loss, 1m

ROLINE FO Jumper Cable 50/125 μ m OM3, LC/LC, Low-Loss-Connector, 1m



Specification:

1. Connector Type : LC Multimode, Low Loss. (easy removable clip and Short Boot)
2. Cable Type :
 - 2-1 Zipcord Cable, ϕ 2.0mm, OM3 50/125um Multimode. (300M/10G Fiber)
 - 2-2 Cable Jacket : light blue, LSZH Material.
3. Shrink Tube
4. List

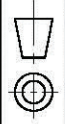
ITEM NO.:	Color	Length
21.15.8820	light blue	0.5M
21.15.8821	light blue	1M
21.15.8822	light blue	2M
21.15.8823	light blue	3M
21.15.8825	light blue	5M
21.15.8828	light blue	10M

- Performance:**
- a. Insertion Loss : < 0.15 dB
 - b. Fiber Extension : $-0.05\mu\text{m} < H < +0.05\mu\text{m}$
 - c. ϕ 1.25mm Ferrule End-face Radius : $7 < R < 25\text{mm}$
 - d. Apex Offset : $< 50\mu\text{m}$
 - e. Increase in insertion loss after 500 mating : 0.2 dB Max
 - f. Operating Temperature : -20° to $+70^{\circ}$
 - g. Storage Temperature : -40° to $+80^{\circ}$

rotronic

ROLINE Fiber Optic Cable, OM3, LC/LC, LSOH, 50/125um

SCALE 1/1 (A4) UNIT



DRAWING NO.

DRAWING CLASSIFICATION S SHEET 1 OF 1

*#: Matching DIM.	21.15.8820	21.15.8823
**#: Important DIM.	21.15.8821	21.15.8825
Others General DIM.	21.15.8822	21.15.8828

GENERAL TOLERANCE OF DIMENSIONS
 X.XXX ± 0.005
 X.XX ± 0.05
 X.X ± 0.1

No.	MODIFIED AREA	ORIGINAL	MODIFY	DATE	MODIFIER
1					