



Datenblatt - Fiche technique - Data sheet

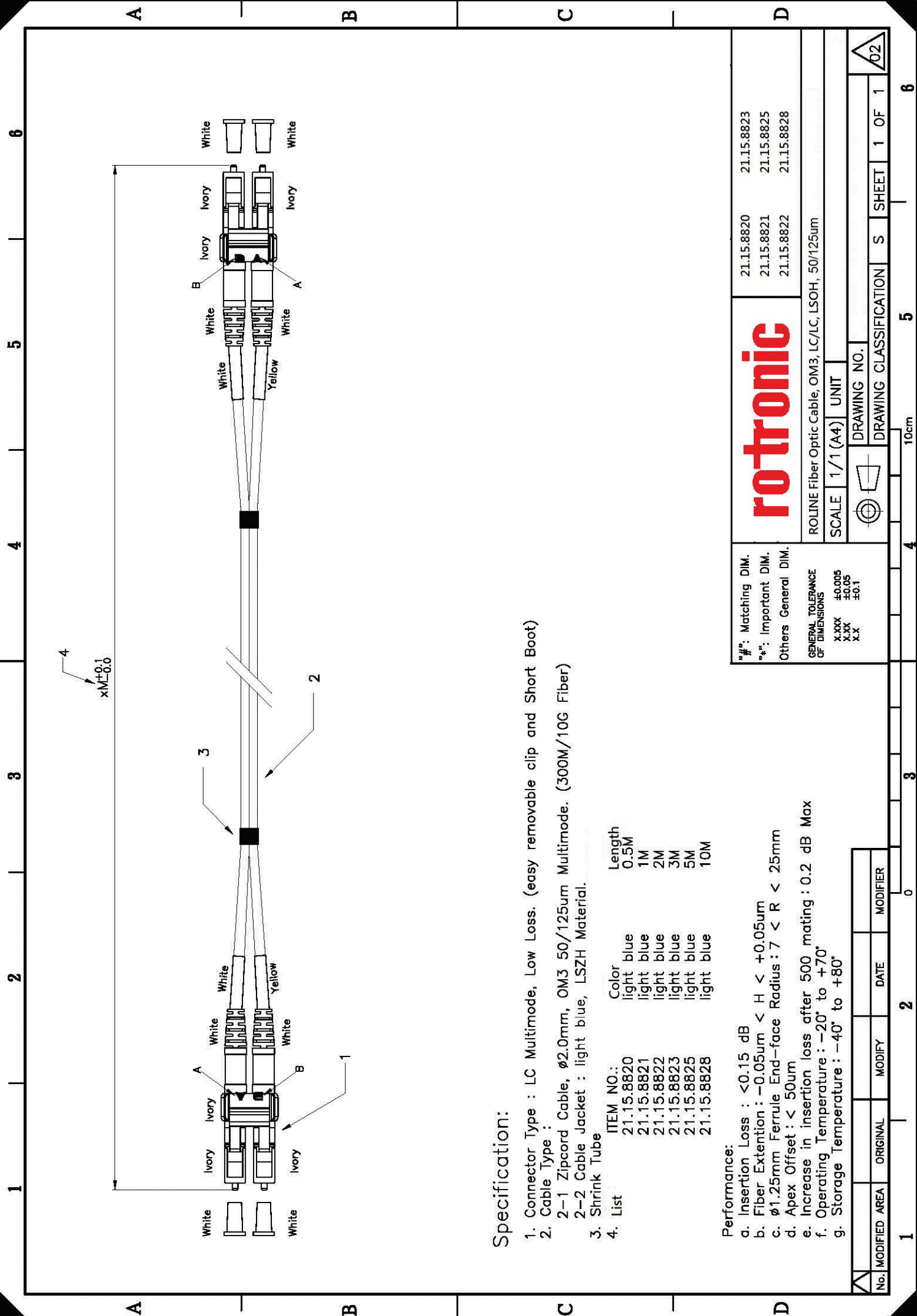
**21.15.8823**



ROLINE LWL-Kabel 50/125 $\mu$ m OM3, LC/LC, Low-Loss-Stecker, 3m

ROLINE Câble FO 50/125 $\mu$ m OM3, LC/LC, connecteurs Low-Loss, 3m

ROLINE FO Jumper Cable 50/125 $\mu$ m OM3, LC/LC, Low-Loss-Connector, 3m



**Specification:**

1. Connector Type : LC Multimode, Low Loss. (easy removable clip and Short Boot)

2. Cable Type :  
2-1 Zipcord Cable,  $\phi$ 2.0mm, OM3 50/125um Multimode. (300M/10G Fiber)

3. Shrink Tube

ITEM NO.:	Color	Length
21.15.8820	light blue	0.5M
21.15.8821	light blue	1M
21.15.8822	light blue	2M
21.15.8823	light blue	3M
21.15.8825	light blue	5M
21.15.8828	light blue	10M

**Performance:**

- a. Insertion Loss :  $< 0.15$  dB
- b. Fiber Extension :  $-0.05\mu\text{m} < H < +0.05\mu\text{m}$
- c.  $\phi$ 1.25mm Ferrule End-face Radius :  $7 < R < 25\text{mm}$
- d. Apex Offset :  $< 50\mu\text{m}$
- e. Increase in insertion loss after 500 mating :  $0.2$  dB Max
- f. Operating Temperature :  $-20^\circ$  to  $+70^\circ$
- g. Storage Temperature :  $-40^\circ$  to  $+80^\circ$

**rotronic**

ROLINE Fiber Optic Cable, OM3, LC/LC, LSOH, 50/125um

SCALE 1/1 (A4) UNIT

DRAWING NO. DRAWING CLASSIFICATION S SHEET 1 OF 1

10cm 5 6

\*#: Matching DIM.  
\*#: Important DIM.  
Others General DIM.

GENERAL TOLERANCE OF DIMENSIONS  
X.XXX  $\pm 0.005$   
X.XX  $\pm 0.05$   
X.X  $\pm 0.1$

No.	MODIFIED AREA	ORIGINAL	MODIFY	DATE	MODIFIER
1			2	0	