



Datenblatt - Fiche technique - Data sheet

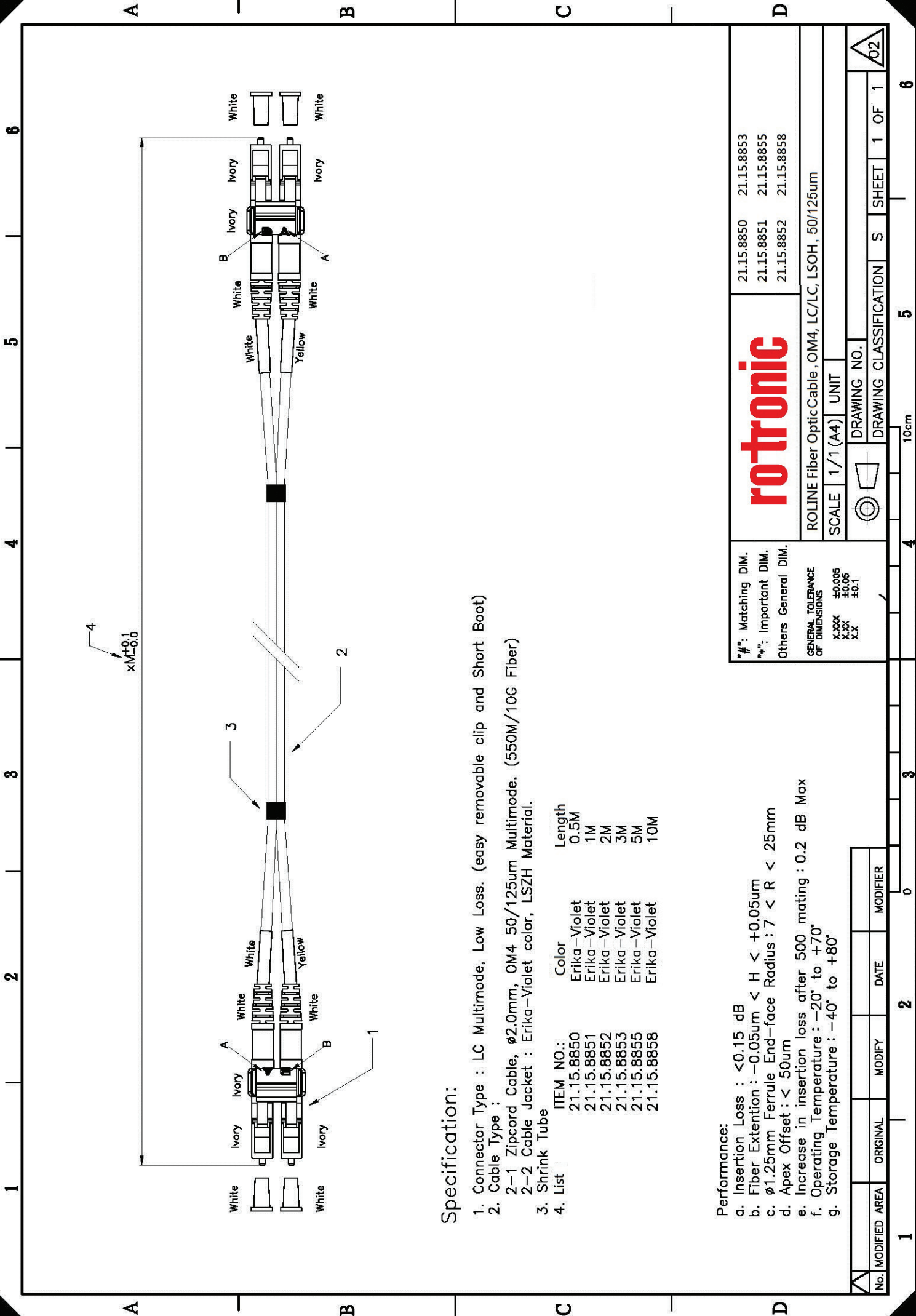
21.15.8853



ROLINE LWL-Kabel 50/125 μ m OM4, LC/LC, Low-Loss-Stecker, 3m

ROLINE Câble FO 50/125 μ m OM4, LC/LC, connecteurs Low-Loss, 3m

ROLINE FO Jumper Cable 50/125 μ m OM4, LC/LC, Low-Loss-Connector, 3m



xM±0.1
xM±0.0

Specification:

1. Connector Type : LC Multimode, Low Loss. (easy removable clip and Short Boot)
2. Cable Type :
 - 2-1 Zipcord Cable, Ø2.0mm, OM4 50/125um Multimode. (550M/10G Fiber)
 - 2-2 Cable Jacket : Erika-Violet color, LSZH Material.
3. Shrink Tube
4. List

ITEM NO.:	Color	Length
21.15.8850	Erika-Violet	0.5M
21.15.8851	Erika-Violet	1M
21.15.8852	Erika-Violet	2M
21.15.8853	Erika-Violet	3M
21.15.8855	Erika-Violet	5M
21.15.8858	Erika-Violet	10M

Performance:

- a. Insertion Loss : <0.15 dB
- b. Fiber Extension : -0.05um < H < +0.05um
- c. Ø1.25mm Ferrule End-face Radius : 7 < R < 25mm
- d. Apex Offset : < 50um
- e. Increase in insertion loss after 500 mating : 0.2 dB Max
- f. Operating Temperature : -20° to +70°
- g. Storage Temperature : -40° to +80°

rotronic

#: Matching DIM.	21.15.8850	21.15.8853
#: Important DIM.	21.15.8851	21.15.8855
Others General DIM.	21.15.8852	21.15.8858

ROLINE Fiber Optic Cable, OM4, LC/LC, LSOH, 50/125um

SCALE 1/1 (A4) UNIT



DRAWING NO.

DRAWING CLASSIFICATION S SHEET 1 OF 1



10cm

No.	MODIFIED AREA	ORIGINAL	MODIFY	DATE	MODIFIER
1					