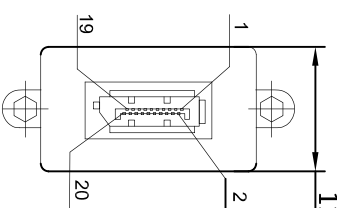
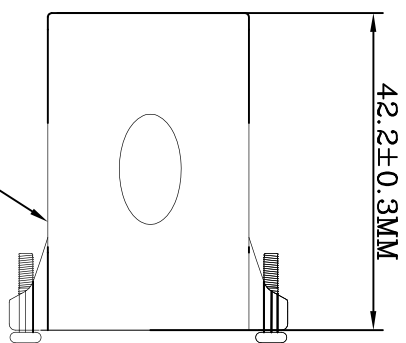


P1



P2

PIN Assignment

| P1    | P2    |
|-------|-------|
| 1     | 12    |
| 2     | 10    |
| 3     | 11    |
| 4     | 9     |
| 5     | 7     |
| 6     | 8     |
| 7     | 6     |
| 8     | 4     |
| 9     | 5     |
| 10    | 3     |
| 11    | 1     |
| 12    | 2     |
| Shell | Shell |

- ELECTRICAL TEST:
- 1.100% OPEN SHORT SHORT & MIS WIRE TEST
  - 2.CONTACT RESISTANCE:2 OHM(MAX)
  - 3.INSULATION RESISTANCE:10M OHM(MIN)
  - 4.HI-POT TEST:DC 300V/10ms

|  |
|--|
| W=20MM 25u Copper foil   |
| #4-40UNC .10MM P4X10MM M4 Screw NI Plated  |
| NUT:H4.75*2.0MM M4 Screw nut NI Plated   |
| UL1007 28AWG BLACK L=25mm  |
| 45P BLACK PVC  |
| LD-PE TRANSPARENT  |
| DisplayPort Port F Insulation:Black,Terminal PIN GOLD Plated:G/F,Shell NI Plated |
| Displayport F TO F Adapter PCB   |

|            |                |          |                                     |
|------------|----------------|----------|-------------------------------------|
| Date       | 2016 / 04 / 27 | Title:   | Keystone Mounting<br>for enclosures |
| Unit       | mm             | Item no. | 85123                               |
| Projection |                | Barcode  | 4043619851232                       |
| Rev        | A              | File No. |                                     |

