

# Delock WLAN Antenna 802.11 ac/a/h/b/g/n 6 ~ 8 dBi 280 mm omnidirectional pole mounting fixed white outdoor

## Description

This WiFi / WLAN antenna is used for transmitting and receiving WiFi signals in accordance with IEEE 802.11 ac/a/h/b/g/n.



N Buchse

## Specification

- Connector: N jack
- Frequency range:
  - 2.4000 ~ 2.4835 GHz
  - 5.1500 ~ 5.8750 GHz
- Gain: 6 ~ 8 dBi
- Polarisation: vertical
- Horizontal beam width: 360°
- Vertical beam width: 23°
- Power handling: max. 100 W
- VSWR: 1.5 max.
- Impedance: 50 Ohm
- Housing: glass fiber
- Housing colour: white
- Operation temperature: -40°C ~ 80°C
- Weight: ca. 120 g
- Dimensions (LxØ): ca. 282 x 22.5 mm

## System requirements

- Device with a free N connector

## Package content

- Antenna
- Pole mounting kit

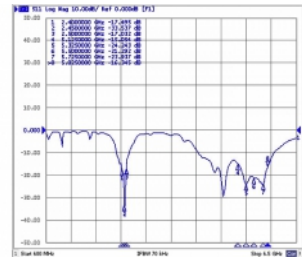
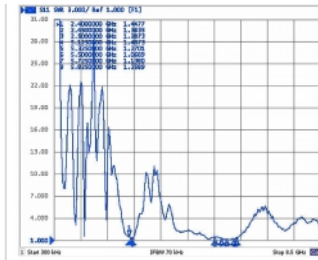
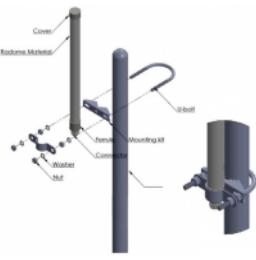
## Item No. 89440

EAN: 4043619894406

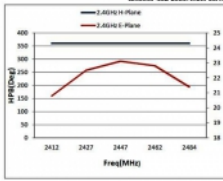
Country of origin: Taiwan, Republic of China

Package: Poly bag

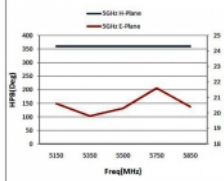
Images



H-Plane	MHz	HPBW(Deg)
2400	360	
2450	360	
2500	360	
Average		360



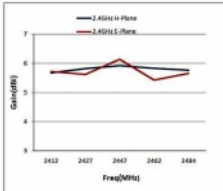
H-Plane	MHz	HPBW(Deg)
5100	360	
5500	360	
5700	360	
5900	360	
Average		360



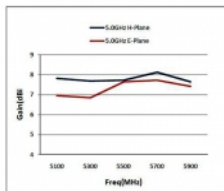
E-Plane	MHz	HPBW(Deg)
2400	22.5	
2450	23.1	
2500	22.8	
Average		22.8

E-Plane	MHz	HPBW(Deg)
5100	20.6	
5500	19.8	
5700	20.3	
5700	21.6	
5900	20.4	
Average		20.54

H-Plane	MHz	Gain(dBi)
2400	5.82	
2450	5.92	
2500	5.83	
Average		5.85

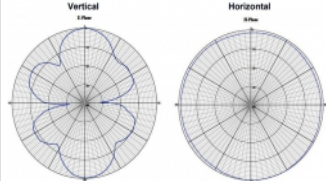
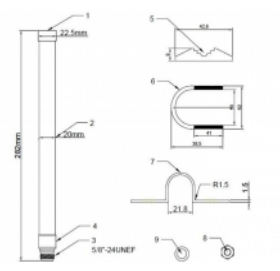


H-Plane	MHz	Gain(dBi)
5100	7.82	
5500	7.68	
5700	7.72	
5700	8.13	
5900	7.65	
Average		7.8



E-Plane	MHz	Gain(dBi)
2400	5.62	
2450	6.14	
2500	5.43	
Average		5.73

E-Plane	MHz	Gain(dBi)
5100	6.95	
5500	6.85	
5700	7.23	
5900	7.42	
Average		7.32



Dimensions (Lxd):	282,0 x 22,5 mm
Interface	
Connection:	N Buchse
Technical characteristics	
Frequency range:	2.4000 GHz - 2.4835 GHz 5.150 GHz - 5.875 GHz
Horizontal beam form:	360°
Polarisation:	linear vertical
Power handling:	100W
Vertical beam form:	23°
VSWR:	1.5
Physical characteristics	
Housing colour:	white
Colour:	white
Housing:	GFK