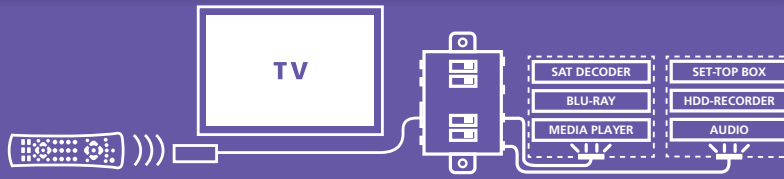


IR Control 10 XTRA™



EN Operate your A/V equipment which is out of sight

- Operate any of your A/V equipment which is located behind closed cupboard doors (or even from another room) with your current remote control.
- With the exception of the very small IR receiver, the complete set can be located completely out of sight.
- With IR blaster function for operating numerous devices with one IR blaster or if you prefer not to stick IR LEDs onto your A/V equipment.
- Works with almost all brands and models and is also suitable for new IR code formats (such as RC-MM) which are used in many new HD devices and digital TV decoders.
- Incorporates new IR filter techniques for use in the vicinity of Flat Screen TVs (Plasma, LCD and LED), indirect sunlight and energy-efficient light bulbs.

DE Bedienen Sie Ihre sich außer Sichtweite befindenden A/V Geräte

- Bedienen Sie mit Ihrer heutigen Fernbedienung Ihre sich hinter verschlossenen Schranktüren (oder sogar in anderen Räumen) befindenden A/V Geräte
- Mit Ausnahme des sehr kleinen IR Empfängers kann der gesamte Satz vollständig außer Sichtweite aufgestellt werden.
- Mit IR Blaster Funktion, um mehrere Geräte mit nur einem einzigen IR Blaster zu bedienen oder wenn Sie keine IR LED auf Ihre A/V Geräte kleben möchten.
- Mit nahezu allen Marken und Modellen vereinbar und geeignet für neue IR-Code Formate (wie RC-MM), die in vielen neuen HD Geräten und digitalen TV-Decodern verwendet werden.
- Enthält neue IR Störunterdrückungstechnik für Verwendung nahe Flachbildschirmen (wie Plasma, LCD und LED Schirmen), indirektem Sonnenlicht und Sparlampen.

FR Sert tout vos appareils A/V qui ne sont pas visible

- Commandez vos appareils A/V derrière les portes de placards fermés (ou même depuis une autre pièce) avec votre télécommande actuelle.
- A l'exception du minuscule récepteur IR, l'ensemble de l'installation peut être placé hors de vue.
- Avec fonction blaster IR pour commander plusieurs appareils avec un seul blaster IR ou si vous ne voulez pas coller des LEDs IR sur vos appareils A/V.
- Fonctionne avec pratiquement toutes les marques et tous les modèles et est compatible avec les nouveaux formats de codes IR (tels que RC-MM) qui sont utilisés dans de nombreux nouveaux appareils HD et décodeurs TV numériques.
- Comporte de nouvelles techniques de filtrage IR pour une utilisation à proximité de Téléviseurs à Écran Plat (Plasma, LCD et LED), de la lumière indirecte du soleil et d'ampoules basse consommation.

ES Controle todos sus aparatos A/V aunque estén fuera del alcance de la vista

- Manejar los dispositivos A/V detrás de puertas de armario cerradas (o aún desde otra habitación) con su mando a distancia actual.
- Todo el set se puede colocar invisiblemente, excepto el pequeño Receptor IR.
- Con función IR blaster para manejar varios dispositivos con solo un IR blaster o si no quiere pegar los LED IR en el equipo A/V.
- Con excepción del pequeño receptor IR el set puede colocarse completamente fuera de la vista.
- Funciona con casi todos los modelos y marcas y es conveniente para los nuevos formatos de códigos de IR (como RCMM) que se utilizan para muchos de los nuevos dispositivos HD y decodificadores digitales de TV.
- Contiene nuevas técnicas de filtración para el empleo en la vecindad de televisores de pantalla plana (Plasma, LCD en LED), luz solar directa o bombillas de bajo consumo.

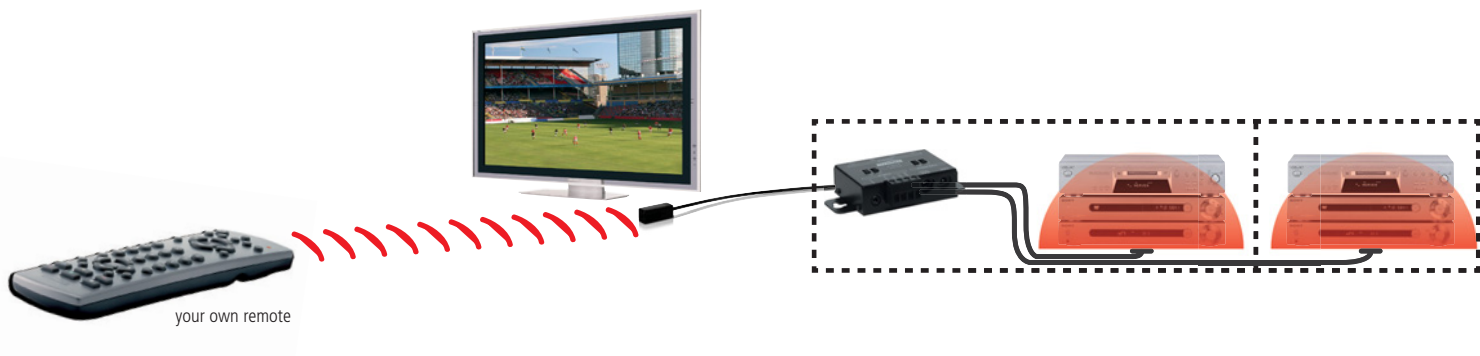
IT Comandi tutti i suoi apparecchi audio/video fuori vista

- È possibile comandare i vostri dispositivi A/V dietro ante chiuse (o perfino da un'altra stanza) tramite il vostro telecomando.
- Ad eccezione del ricevitore IR di dimensioni minime, è possibile collocare fuori dalla vista tutte le apparecchiature.
- Provvisto della funzione blaster IR per comandare più dispositivi tramite un solo blaster IR o quando non volete applicare dei LED IR alla vostra apparecchiatura.
- Funziona con la maggior parte di marche e modelli ed è adatto ai nuovi formati di protocollo IR (quale RC-MM) che vengono utilizzati diffusamente nelle nuove apparecchiature HD e nei decoder TV digitali.
- Fornito di nuove tecniche di filtraggio IR per l'uso vicino a schermi piatti (schermi al plasma, LCD e LED), luce solare indiretta e lampade a risparmio energetico.

NL Bedien uw A/V apparaten die uit het zicht staan

- Bedien uw A/V apparaten achter gesloten kastdeurtjes (of zelfs vanuit een andere ruimte) met uw huidige afstandsbediening.
- Met uitzondering van de zeer kleine IR ontvanger is de complete set volledig uit het zicht te plaatsen.
- Met IR blaster functie om meerdere apparaten met maar één IR blaster te bedienen of wanneer u geen IR LEDs op uw A/V apparatuur wilt of kunt plakken.
- Werkt met vrijwel alle merken en modellen en is geschikt voor nieuwe IR code formaten (zoals RC-MM) welke worden gebruikt in vele nieuwe HD apparaten en digitale TV decoders.
- Bevat nieuwe IR filtertechnieken voor gebruik in de buurt van Flat Screen TV's (Plasma, LCD en LED, indirect zonlicht en spaarlampen).

IR Control 10 XTRA™



Technical data

Surface Mount IR Receiver

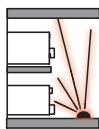
Frequency range:	30-60 KHz
IR reception range:	± 10 meters
IR reception angle:	90° (+45°/-45° from centre)
Cable length:	3 meters, extendable up to 300 meters
IR reception indication:	YES, purple indication LED
Status indication:	YES, green indication LED
Receiver dimensions:	40 x 13 x 11mm

IR module

Power supply POWER:	100-240VAC 50/60Hz, 12VDC 200mA (supplied)
Power supply STATUS:	5-24VDC / 5-12VAC plug, - 5.5mm outside / + 2.1mm inside (not supplied)
IR input:	1x 3.5mm jack connector, for standard IR receiver 1x screw connector, for up to 6 in parallel connected IR receivers. Extendable up to 300 meters using CAT5 (or equivalent)
IR output:	4x 3.5mm jack plug (mono), switchable for IR extension cables with emitter or blaster LEDs
Dimensions:	95 x 46 x 20 mm

IR extension cable with 1 blaster LED

Connection:	3.5mm jack plug (mono)
IR LEDs:	1x IR blaster LED
Cable length:	3 meters



IR extension cable with 2 emitter LEDs

Connection:	3.5mm jack plug (mono)
IR LEDs:	2x IR emitter LEDs
Cable length:	3 meters

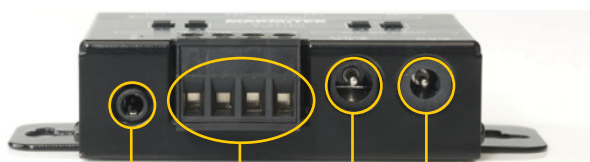


Products specs may change without prior notice.

Connections IR Module



IR OUTPUT: 4 selectable ports Blaster or Emitter



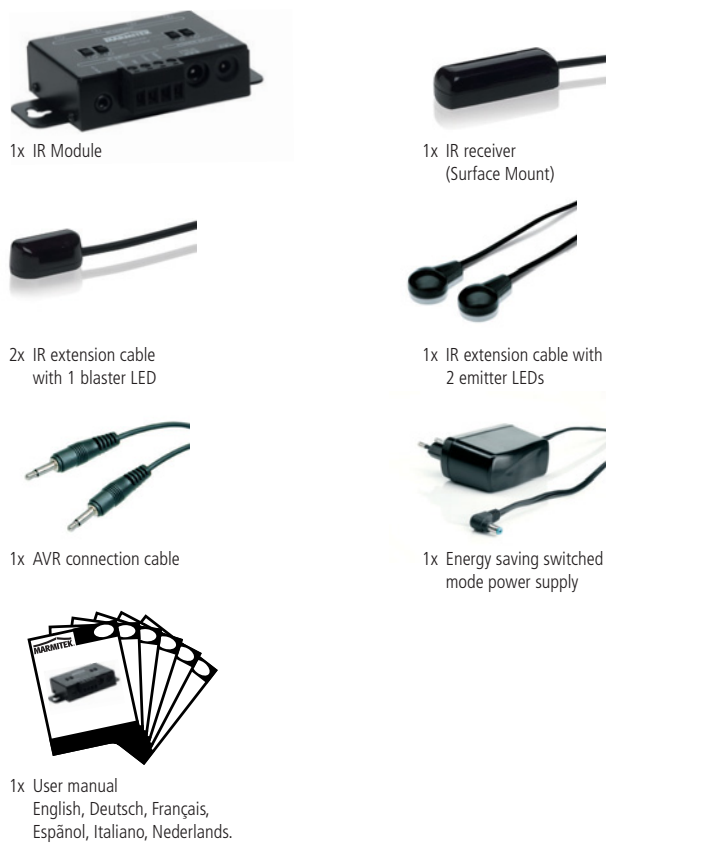
IR INPUT: Single Receiver

POWER INPUT: Status adapter

IR INPUT: Multiple Receivers (up to 6)

POWER INPUT: Power adapter

Set includes



Order information

IR Control 10 XTRA™	EU Version	Art.nr. 08140	EAN 8718164531408
	UK Version	Art.nr. 08141	EAN 8718164531415
Gift box	Size (LxWxH)	260x185x65mm	

Also available

Extra IR Receiver

Every system needs at least one IR receiver (up to 6). With an extra IR receiver you can also operate your A/V devices from another room.

IRC3060S – Surface Mount	Art.nr. 08142 / EAN 8718164531422
IRC3060P – Panel Mount	Art.nr. 08143 / EAN 8718164531439

Extra IR extension cable with one blaster LED

To operate more A/V devices in an extra cabinet. An IR blaster radiates much more infrared light (even up to 2 meters) so it can operate multiple devices. Placement of the IR blaster is a lot less critical as opposed to IR LEDs.

Art. nr. : 08144 / EAN 8718164531446

Extra IR extension cable with two emitter LEDs

To operate 2 extra A/V devices. IR LED must be placed directly on the IR window of your A/V device.

Art. nr. : 08145 / EAN 8718164531453