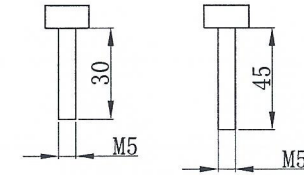


DS Fixing Bolt 2PCS



Screw M5×30 2PCS
Screw M5×45 2PCS

Desk-Top Series	OUTPUT (4) Schuko Socket (16A Rated)	OPERATING TEMPERATURE 0° to 60°C
INPUT 250VAC 16A 50HZ (1) EPS7104 Socket	BRANCH CIRCUITS (NONE)	MOUNTING ACCESORIES (2)DS Fixing Bolt (2)Screw M5×30 (2)Screw M5×45

Revisions		
Rev	Description	Date

DRAWING TYPE (NO PERMISSION, NO CHANGING)	Ratio Electric P/N	5010
unit=mm	Housing	Aluminium (Grey)
TECHNICAL STANDARD 1.JT11; 2.NO RUSTNESS 3.NO FLAW ON THE SURFACE		Endcover PA6GF (Black)
FILLET R0.5 ANGLE ±0.5° FIRST ANGLE 	 www.ratio-electric.com DATE 11-04-2015	
SCALE 1:3		